

VRB25-LED

Rotating Marine Beacon 25 NM by night

The VRB25-LED is a high intensity rotating beacon suitable for ranges up to 25 nautical miles. Being an LED beacon, it is extremely energy efficient and can be monitored digitally.

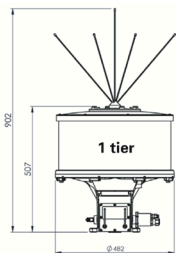
It is an ideal replacement for beacons with Fresnel lenses in historic lighthouses, or locations requiring intensities greater than what can be achieved with typical stationary beacons.

- Weatherproof enclosure suitable for external mounting
- Maintenance-free LED
- Constant-current LED drivers
- Direct-drive brushless motor
- 1.0 to 15.9 RPM rotation speed with 240 increments
- Day and night intensity is adjustable from 0 to 100%
- Range 45 NM by night and 10,5 NM by day @ 0,85T
- Automatic day/night detection
- Optional security code
- Programmable low-voltage cut-out
- Selectable master/back-up operation mode
- Digital inputs/output
- RS232

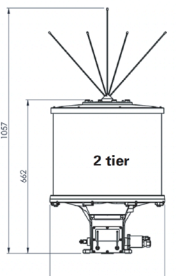


Performance

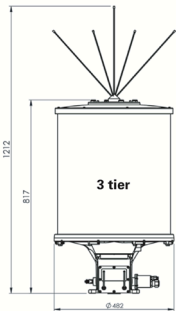
Product	Horizontal divergence @ 5% specified intensity	Vertical divergence @ 5% specified intensity	Peak intensity red	Peak intensity green	Peak intensity yellow	Peak intensity white	Power consumption @ peak intensity
VRB25-8P-1T-LED	1.5°	1.5°	160 000 cd	270 000 cd	225 000 cd	410 000 cd	23 W
VRB25-6P-1T-LED	1.5°	1.5°	220 000 cd	360 000 cd	286 000 cd	520 000 cd	23 W
VRB25-8P-2T-LED	1.5°	1.5°	320 000 cd	540 000 cd	500 000 cd	820 000 cd	45 W
VRB25-6P-2T-LED	1.5°	1.5°	440 000 cd	720 000 cd	572 000 cd	1 040 000 cd	45 W
VRB25-8P-3T-LED	1.5°	1.5°	480 000 cd	810 000 cd	675 000 cd	1 230 000 cd	68 W
VRB25-6P-3T-LED	1.5°	1.5°	660 000 cd	1 080 000 cd	858 000 cd	1 560 000 cd	68 W
VRB25-8P-4T-LED	1.5°	1.5°	640 000 cd	1 080 000 cd	900 000 cd	1 640 000 cd	91 W
VRB25-6P-4T-LED	1.5°	1.5°	880 000 cd	1 440 000 cd	1 144 000 cd	2 080 000 cd	91 W



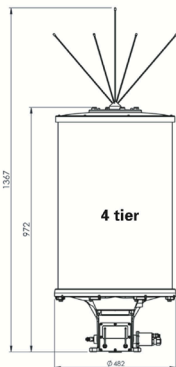
EST Weight: 43KG
Focal Height: 390mm



EST Weight 58KG
Focal Height: 467mm



EST Weight: 73KG
Focal Height: 545mm



EST Weight 87KG
Focal Height: 622mm

Optical specification

Light source	High Power Light Emitting Diode (LED)
Temperature control	LEDs monitored for constant intensity control and over temperature protection

Main technical specification

Nominal range	Up to 25 NM
Lens	Machined cast acrylic
Base	Cast marine grade aluminium, anodised and painted
Body	Anodised marine grade aluminium
Designed service life	10 years
Weight	1 tier: 43 kg / 94.7 lb 2 tier: 58 kg / 127.8 lb 3 tier: 73 kg / 160.9 lb 4 tier 87 kg / 191.8 lb
Flash character	Dependent on configuration
Temperature range	-35° to +60°C / -31° to +140°F
Voltage	12 VDC
Degree of protection	IP65
RPM range	1.0 to 15.9
Cable length	2 m

Order Overview VRB25-LED

Product code

Code	Note
VRB25c-xP-nT-LED	
c	Color (R, W, G or Y)
x	Number of panels (6 or 8)
n	Number of tiers (1, 2, 3, 4)
OPT	Options

Option matrix

LPD-02	Lightening protection device factory option
--------	---