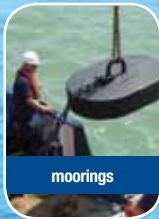
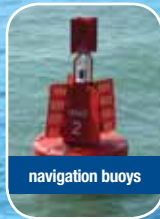




data buoy platforms



moorings



navigation buoys



hydrosphere



navigation lights



mooring buoys



installation

the UK's leading supplier of aids to navigation

# Mobilis M 1200

## 1.2m diameter navigation buoy



MOBILIS

The M 1200 is a low-cost, lightweight, multipurpose, small buoy with a 1.2m diameter hull and a focal height of 1.5m.

The buoy is particularly suited for channel marking of smaller harbours, fish farms, outfalls, and for use as a Special Mark for marking underwater scientific instrumentation.

Weighing approximately 85Kg, the buoy can be easily deployed using a small craft. It is made up of two self-coloured, medium density polyethylene (MDPE) floats, which are bolted together through a central flat steel keel plate. Daymarks are also manufactured from MDPE and are bolted to the top face of the hull floats. Mobilis MDPE floats are UV stabilised to retain colour within IALA guidelines for in excess of 15 years.

The buoy's robust construction gives good stability in tidal flows and comes available with upright storage, low draft and high current keel options.

The M 1200 is available as Lateral, Cardinal, Isolated Danger or Special Mark configurations and is ideal for fitting a Carmanah M650 self contained navigation light.

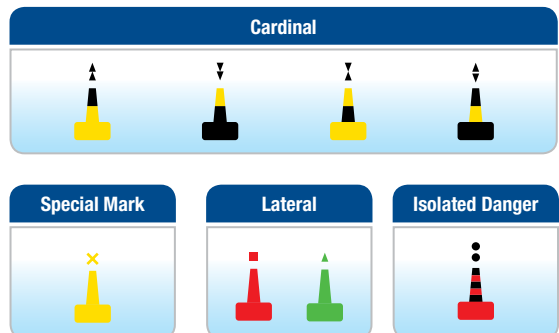


navigation buoys

### features:

- Extremely low maintenance
- Interchangeable parts
- Suitable for radar reflectors
- Available with standard, upright storage, low draft and high current keel options
- UV stabilised MDPE hull (does not require painting)
- Modular system - reduces spares holding
- Wide range of self contained solar lights accepted
- Lateral, Cardinal, Isolated Danger and Special Mark configurations

### buoy configurations



# Mobilis M 1200

## specifications and applications

### construction

Central Structure	Marine grade painted steel plate
Hull	MDPE (2 float sections)
Daymark	MDPE

### physical

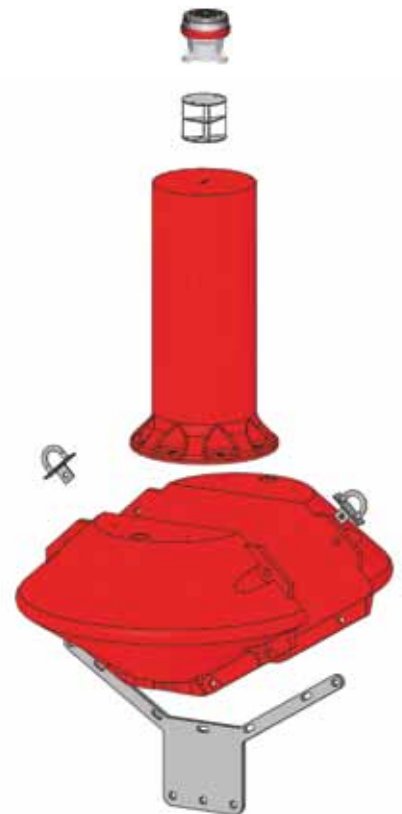
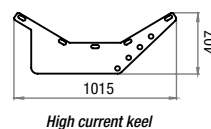
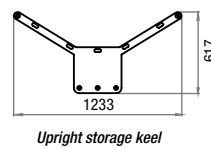
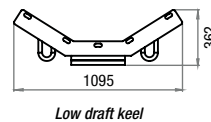
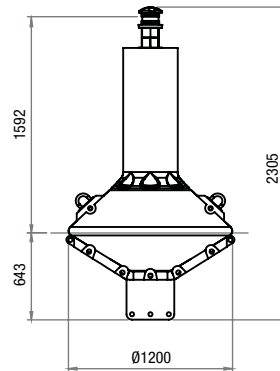
Diameter m	1.2
Mass Kg	85
Max Ballast Kg	N/A
Max Kg	85
Gross Buoyancy Kg	380
Reserve Buoyancy Kg	295
Focal Plane m	1.5
Draft m	0.6
Overall Height m (exc. topmark)	2.2

### application

Inshore	✓
Estuary	✓
Coastal	
Offshore	

### mooring

Type	Single Point
Chain mm	10 - 20
Sinker Kg	500 - 1000



## the right buoy for the job

To make sure you get the right buoy for your requirements consider all the factors that will affect the visibility and stability of the mark including: depth of water; sea conditions and current; lighting and range of light required; shape and topmarks; and focal plane.

## mooring tips:

The mooring is an integral part of the system that will affect the performance and reliability of the buoy. On problematic locations we recommend a detailed mooring study be carried out to maximise reliability and minimise future maintenance costs.



**hydrosphere**

### about Hydrosphere

Hydrosphere is the UK's leading supplier of aids to navigation and has been providing cost-effective solutions to the marine industry for more than 18 years. We offer a wide range of navigation and mooring buoys, LED navigation lights, sector lights, rotating beacons, leading lights, jetty masts, beach and zone marking products and associated moorings. Installation and maintenance services are available for all our products and systems.

For more information please contact us.

data buoy platforms | moorings | navigation buoys | navigation lights | mooring buoys | installation

t: +44 (0)1420 520374

www.hydrosphere.co.uk

e: sales@hydrosphere.co.uk

Compliant with all IALA recommendations.

