



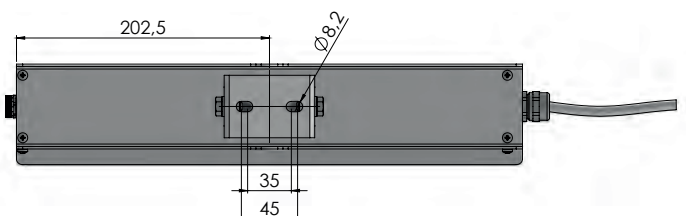
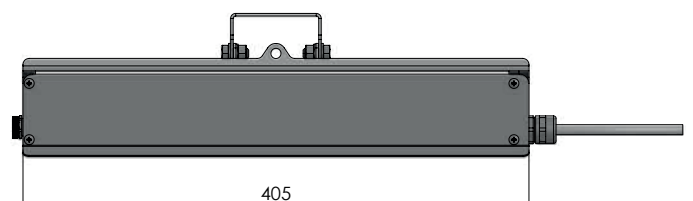
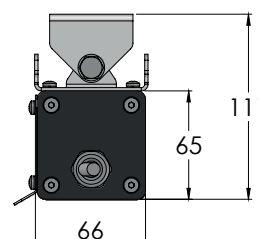
LTF 400

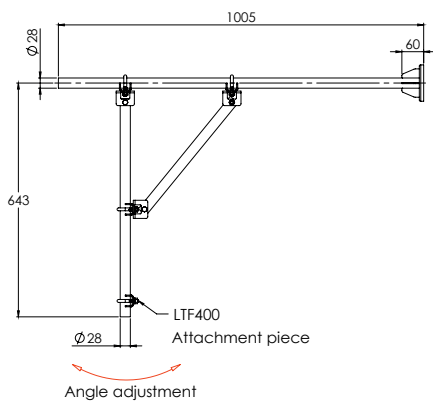
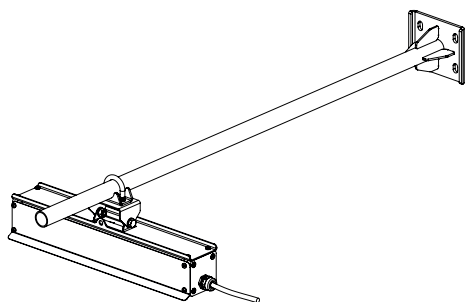
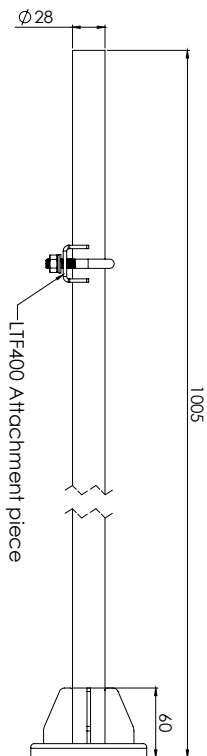
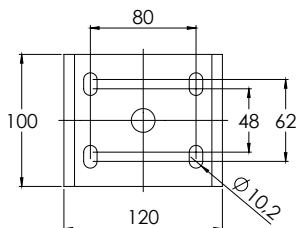
Floodlight

Sabik LTF 400 is a floodlight for illuminating fixed structures and auxiliary signs. Designed to excel in demanding marine environment, it is also a robust choice for inland installations.

LTF 400 comes in different opening angles and brightness options to match your illuminating and power consumption requirements. The integrated high efficiency controller and maintenance-free LED-based design make this product ideal for remote and solar-powered installation.

- Very low power consumption ideal for solar-powered sites
- Rugged, sealed, maintenance-free construction
- Automatic day/night switching
- Beam profile optimized for even distribution on luminated structures





Optical specification

Light source	High Power Light Emitting Diode (LED)
Divergence	8° / 50° / 120° FWHM (Narrow, Wide, Ultra Wide)

Main Technical Specification

Lens	UV stabilized acrylic
Housing	Aluminium, stainless steel A4, UV stabilized acrylic
Designed service life	More than 10 years
Weight	1.3 kg
Dimension (W x D x H)	440 x 72 x 79 mm
Flash character	Fully programmable (including presets)
Temperature range	-40° to +60°C
Voltage	12 VDC (10-30 VDC)
Solar charger	No
Degree of protection	IP 65
Reverse polarity protection	Yes
Daytime idle consumption	< 0.6 mA @ 12 VDC
Battery cut off voltage	10 VDC
Cable length	2 m / 6 m

Other

Twilight switch	Yes
Water tight equalizing valve	Yes
Mounting	2 pcs M8, Additional mounting arm option

Order Overview LTF 400

Product code

LTF 400 0.9 W	LTF 400 3 W	Beam opening
LTF400-N-W-1	LTF400-N-W-3	8°
LTF400-W-W-1	LTF400-W-W-3	50°
LTF400-UW-W-1	LTF400-UW-W-3	120°