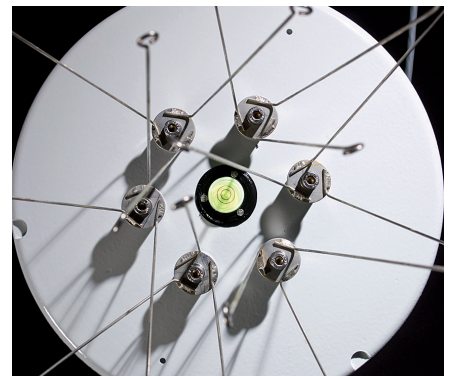
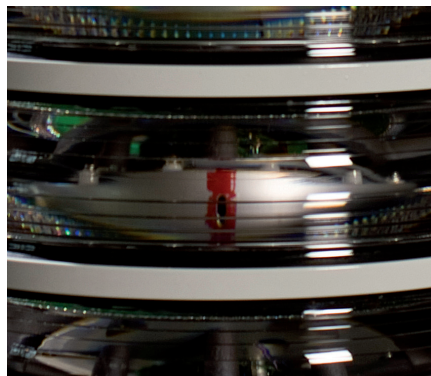
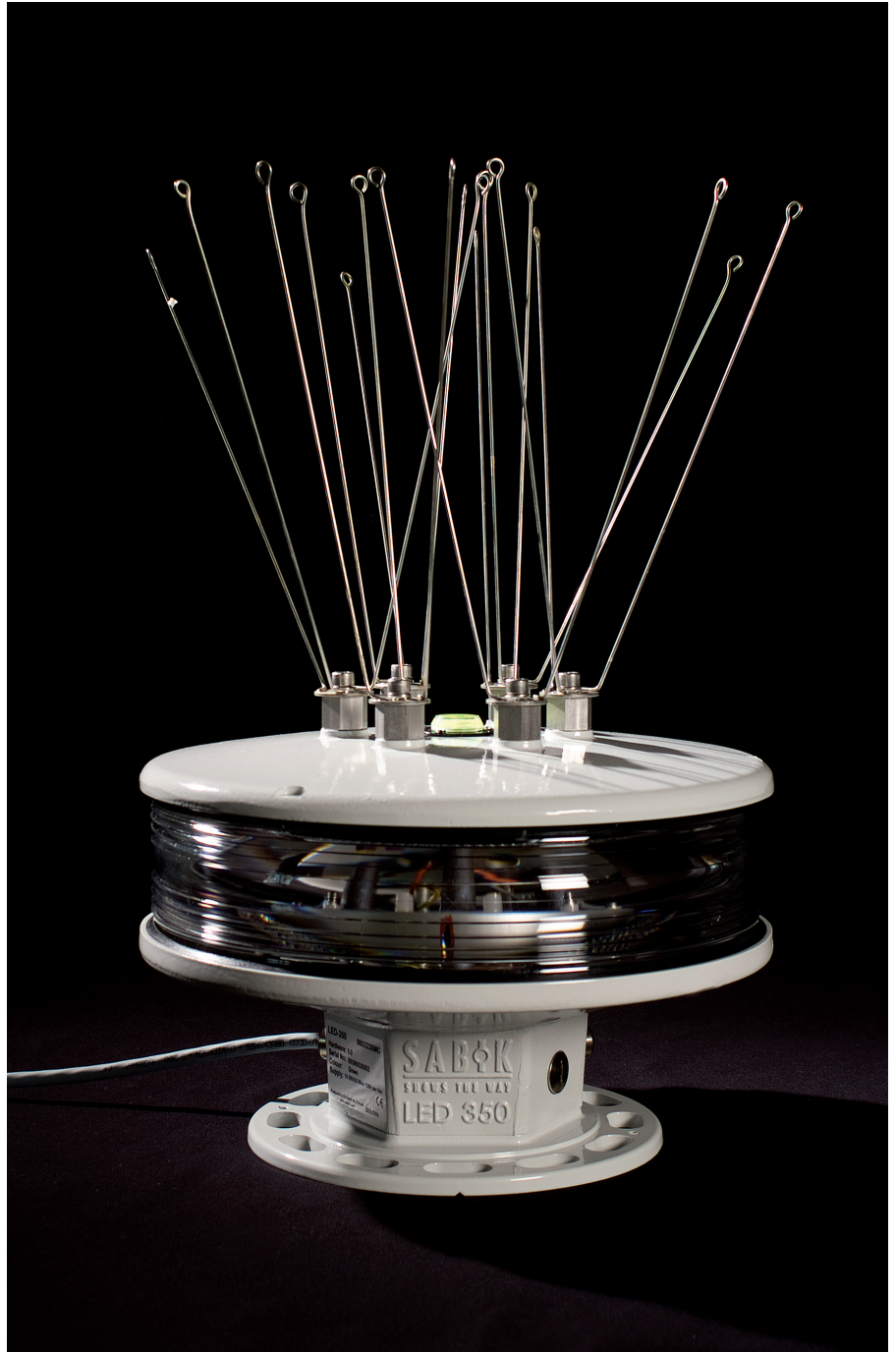


## LED 350EX

High intensity LED lantern for offshore installations

LED 350EX is a high performance omni-directional LED beacon. The lantern is maintenance free, compact and robust in design. The lantern can be supplied with up to three tiers. A 1-tier LED 350EX has a range of 10 NM.

- With 3 tiers range up to  
13 NM at  $T_c = 0,74$   
19 NM at  $T_c = 0,85$
- ATEX category Zone 1 and Zone 2
- Standard IALA colours Red, Green, White, Yellow
- Rugged aluminium housing
- Extremely low power consumption, suitable for solar and battery operation
- Integrated flasher with a day light switch and an 8 ampere solar panel charger
- Field adjustable intensity and range
- Cable synchronization between light units





#### Bird spikes

Stainless steel bird deterrents as standard. Easy to replace. Offers great protection against large birds like cormorants. Spike design to prevent injury to service technicians.



#### Level indicator

The lantern can easily be levelled in field using the integrated bubble level indicator



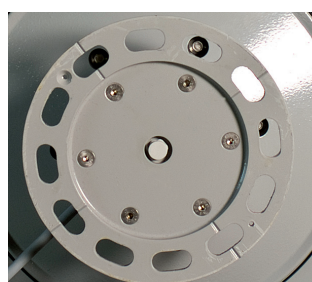
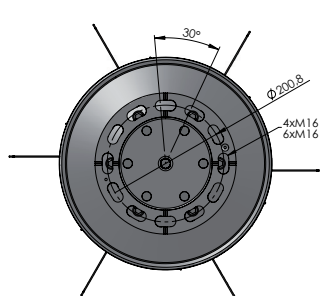
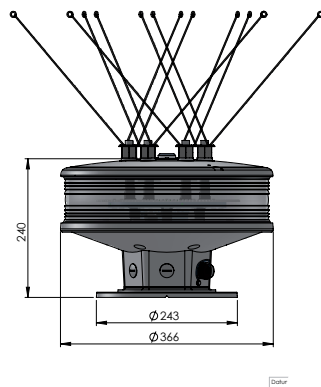
#### Grounding plug

The base plate has a grounding plug as standard to enable good protection for electromagnetic interference.



#### Additional cable entry

Equipped as standard with two cable entries. If the second entry is needed e.g. for cable sync or for a solar module a standard M20 cable gland can be fitted.



#### Installation

The bottom plate of the LED 350 supports installation on structure using 3 x M12 bolts or 4 x M12 bolts on a 200 mm radius. The mounting holes are galvanic isolated with plastic isolators. PTFE breathing vent for pressure release.

### Main Technical Specification

<b>Lens visual/Mechanical diameter</b>	350 mm
<b>Lens material</b>	UV stabilized Polycarbonate
<b>Light source</b>	Light Emitting Diodes (LEDs)
<b>Vertical divergence</b>	1.5° @ 50 % (±0.3°) and 3° @ 10% (±0.5°) of peak intensity
<b>Unit lifetime</b>	Up to 10 years
<b>Weight</b>	8 kg for single tier unit, add 2 kg for each tier
<b>Controller</b>	Sabik LED flasher
<b>Temperature range</b>	-40°...+60°C
<b>Degree of protection</b>	IP 66
<b>Supply Voltage</b>	9 – 28 VDC
<b>Power consumption</b>	12 watts/tier
<b>EX Zones</b>	Zone 1 and Zone 2 indoor and outdoor
<b>Ex approvals</b>	Eex emb op is II T4
<b>Certificates</b>	VTT 06 ATEX 089X

### Optical performance

Maximum fixed luminous intensity				
1-tier, 12 W	1.400 cd	1.400 cd	2.700 cd	1.500 cd
2-tiers, 24 W	2.800 cd	2.800 cd	5.400 cd	3.000 cd
3-tiers, 36 W	4.200 cd	4.200 cd	8.100 cd	4.500 cd

### Product codes, 1 tier model

LED 350EX narrow lens	Colour
LED 350EX NW	white
LED 350EX NR	red
LED 350EX NG	green
LED 350EX NY	yellow